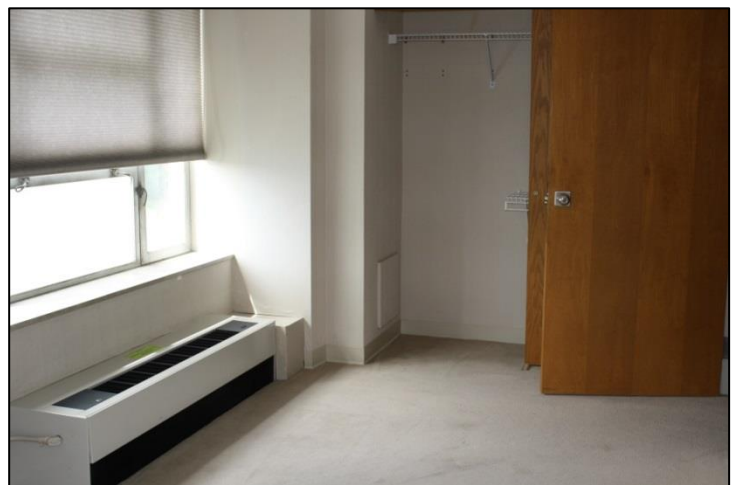


Office Suite Available

Large office suite available for immediate occupancy. This second-floor suite includes a full kitchen, two private bathrooms, one enclosed office, a large office space that could accommodate approximately eight cubicles, and a spacious three season room overlooking beautifully landscaped grounds.



Property details

- Convenient location: 3 minutes from downtown Milwaukee
- Like-minded non-profit community organizations
- Free, ample off-street parking – parking lot available for a fee
- Handicap accessible
- Affordable rates
- Secure facility
- Receptionist services
- Air-conditioned meeting rooms of all sizes
- Excellent for startup organizations
- Conference rooms, classrooms, and banquet room available
- Audio/Visual equipment available for rent, for meetings on site
- office furniture available for purchase

To inquire about this or any other available office space at City on a Hill, contact Latasha Howard at (414) 931-6670 or lhoward@cityonahillmke.org