

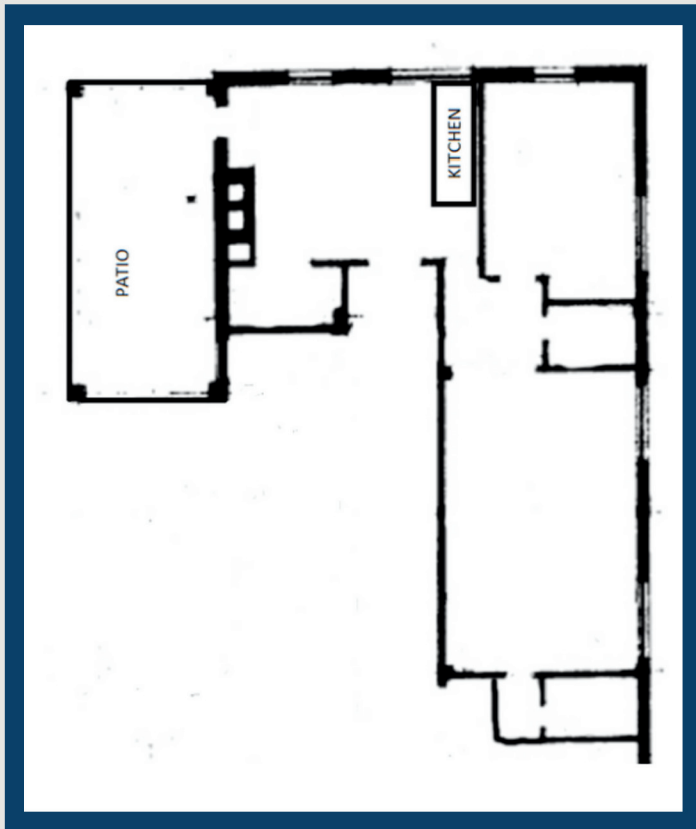


FOR RENT

CITY ON A HILL INC.

2224 W. Kilbourn Ave, Milwaukee, WI 53233

OFFICE SUITE WITH OUTDOOR SPACE



DESCRIPTION

This is a 1,274 square foot office suite with a 288 square foot outdoor patio located minutes away from Marquette University and downtown Milwaukee.

MORE FEATURES

- Full kitchen and 2 private bathrooms
- Free off-street parking
- Handicap accessible
- Electricity and heat included
- Secured facility

(414)-931-6670 | LEASING@CITYONAHILLMKE.ORG